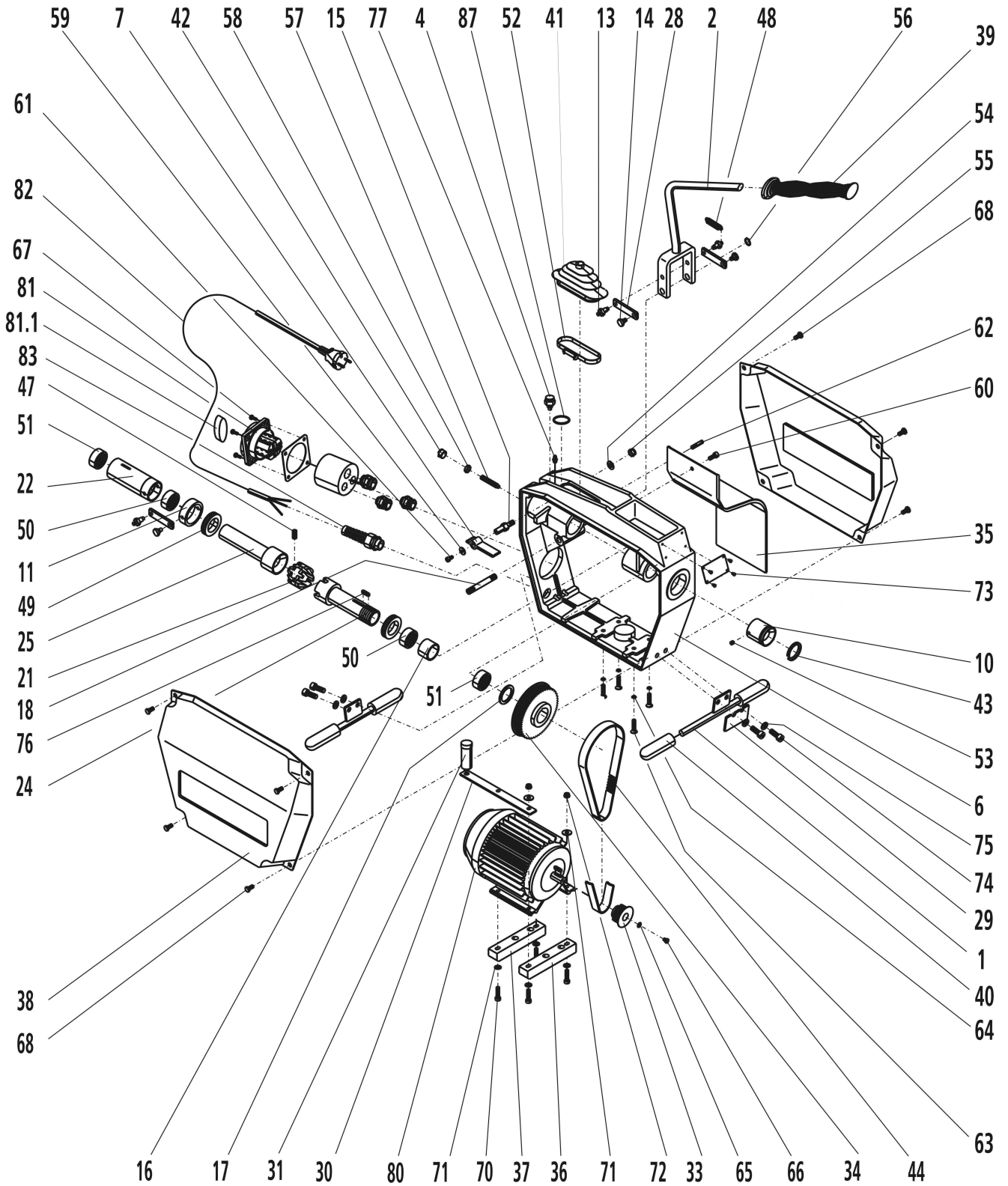


R600

No. 72687, 72665, 72869

dated: 01/18



R600

dated: 01/18

No. 72687, 72665, 72869

Item no.	Description	Article no.	Old article no.	Quantity
---	Label lubrication instruction	H99079	H99079	1
1	Base, in front	H90103	H90103	2
2	Hand lever	H98400	H98400	1
4	Catch	H90111	H90111	1
6	Housing	H98409	H98409	1
7	Hand lever locking	H98401	H98401	1
10	Cap, in front, metric	H99683	H99683	1
11	Thrust collar 52x42x20	H98281	H98281	1
13	Joint bolt 10x21,5	H98285	H98285	2
14	Joint bolt 10x18,5, in front	H98287	H98287	2
15	Bolt for hand lever locking	H98451	H98451	1
16	Spacing tube	H98472	H98472	1
17	Washer disc	H98473	H98473	1
18	Bolt for hand lever	H98452	H98452	1
21	Clamping jaw set	72638	72638	1
22	Bushing compl.	H98278	H98278	1
24	Conic shaft metric	H98474	H98474	1
25	Conic sleeve	H98475	H98475	1
28	Joint plate	H90130	H90130	2
29	Clutch holder	H98232	H98232	1
30	Condenser holder	H90134	H90134	1
31	Condenser 16 my 400V	H98917	H98917	1
33	Drive pulley	H98304	H98304	1
34	Drive pulley	H99681	H99681	1
35	Drain gutter	H98410	H98410	1
36	Insulation flat, in front	H98356	H98356	1
37	Insulation flat, rear	H98307	H98307	1
38	Hood, red	H90136	H90136	2
39	Handle PVC	H98397	H98397	1
40	Rubber pad 25x12x90 mm / 60-7	H98256	H98256	4
41	Bellow	H98395	H98395	1
42	Plug	H98358	H98358	1
43	O-ring	H98369	H98369	1
44	Toothed drive belt 1871075	H98295	H98295	1
47	Compression spring 8,5x26 / 60-24	H98273	H98273	3
48	Tension spring	H90150	H90150	1
49	Ball bearing 51106	H98276	H98276	2
50	Needle bearing HK3016	H98280	H98280	2
51	Needle bearing H.37x30x18x60-30	H98279	H98279	2
52	Hose clip	H97456	H97456	1
53	Set screw M6x6 DIN 914	H98266	H98266	2
54	Washer DIN125 A8,4	H98671	H98671	1
55	Hexagon nut M8 DIN 985	H88502	H88502	1
56	Retaining ring DIN471 12x1	H98973	H98973	2
57	Set screw DIN 417 M8x50	H88603	H88603	1
58	Hexagon nut M8 DIN 934	H98289	H98289	1
59	Washer DIN 9021 B5,3 galv.	F81677	H98670	1
60	Screw	H98291	H98291	1
61	Screw M5x12 DIN 912	H98669	H98669	1
62	Grooved dowel pin DIN1469 6x28	H88582	H88582	1
63	Screw DIN7991 M6x30 galv.	H98309	H98309	4
64	Lock washer V6 DIN 6797 galv.	H98310	H98310	4
65	Washer 5,3 DIN 137 Form A INOX	R9895800	H98958	1
66	Screw DIN 933 M5x16 galv.	H98606	H98606	1
67	Screw DIN 7985 M4x12	H98333	H98333	4
68	Fillister head screw with flange M6x16	L20021	L20021	8
70	Screw DIN912 6x30 galv.	H98352	H98352	4
71	Washer DIN125 A 6,4 galv.	H98353	H98353	6
72	Hexagon nut M6 DIN 985	H88501	H88501	4
73	Grooved drive stud	H98254	H98254	4
74	Screw DIN912 M8x25 galv.	H98262	H98262	4
75	Spring washer A 8 DIN 127 galv.	H98263	H98263	4
76	Paralell key DIN6885 A 5x5x25	H98200	H98200	1
77	Lubrication nipple H1 M6x1	H98963	H98963	2
80	Motor 100V	H98944	H98944	1
80	Motor 230V	H98296	H98296	1
80	Motor 110V	H98297	H98297	1
81	Switch complete	H98327	H98327	1
81.1	Knob for switch with screw	1500000472	1500000472	1
82	Power cord ASADA	F85079	F85079	1

R600

dated: 01/18


No. 72687, 72665, 72869

Item no.	Description	Article no.	Old article no.	Quantity
82	Line cord „EUROPE“	H98313	H98313	1
82	Power cord EUR with PRCD (230V)	F88086	F88086	1
83	Screwed cable gland PG 13.5	H86356	H86356	1

IMPORTANT! To assure safety and reliability, repairs, maintenance and adjustment must be performed by ROTHENBERGER Kelkheim or authorized Service-Centers. Always use Original-Service-Parts. Order your accessories and spare parts from your specialist retailer or using RoService+ online.

Tel. +49 6195 - 800 **8200**

Fax: +49 6195 - 800 **7491**

 service@rothenberger.com